

C-MAP 4D

Your all-in-one charting solution

Quick Start Guide

Furuno 1670F/1870F

CONTENTS

INTRODUCTION	3
Media.....	3
Coverage and Pricing	3
CONTENT AND FEATURES	3
3D View.....	4
High-Resolution Satellite Imagery	4
Dynamic Raster Charts	5
Easy Routing.....	5
VALUE ADDED DATA.....	6
High-Resolution Bathymetry	6
Sport Fishing Data.....	6
PLOTTER CONTROL OPTIONS.....	7
CUSTOMIZE CHART PRESENTATION	8
MAKE THE MOST OF 4D.....	9
3D VIEW	9
Enable 3D View.....	9
Tilt and Rotate 3D View	9
Exaggerate 3D View.....	9
HIGH-RES SATELLITE IMAGERY	10
Overlay Satellite Imagery	10
Satellite Transparency	10
DYNAMIC RASTER CHARTS	11
Overlay Raster Charts	11
Raster Transparency	11
EASY ROUTING.....	12
Setup Easy Route	12
Calculate Easy Route.....	13
VALUE ADDED DATA.....	14
MANAGING VALUE ADDED DATA.....	14
VAD CATEGORIES.....	14
Standard VAD	14
Paid VAD.....	14
UNLOCK VALUE ADDED DATA	15

Introduction

C-MAP 4D provides an all-in-one charting solution and includes a complete range of navigational features and technology. With C-MAP 4D, you get the most up-to-date vector data plus Dynamic Raster Charts, Satellite Imagery, 3D-View and Easy Routing. C-MAP 4D also delivers continuous updates that can be unlocked online, providing another way to customize navigation data to enhance your boating experience.

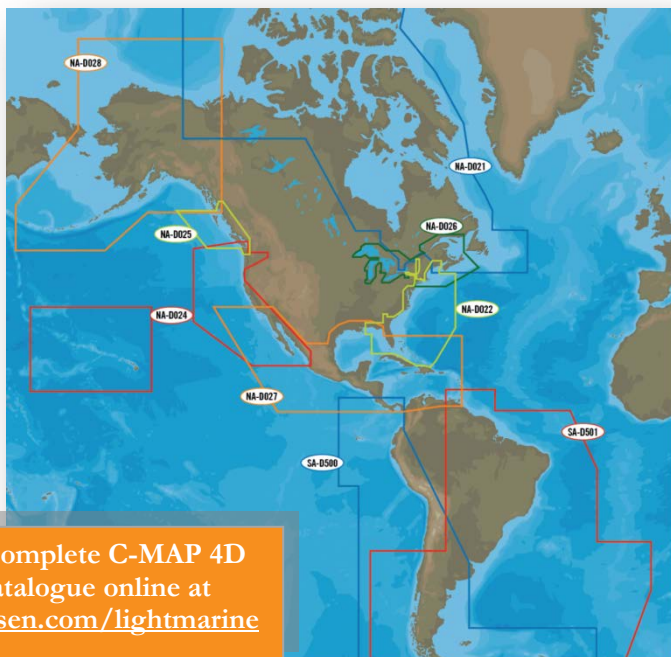
Media

All C-MAP 4D cards are Secure Digital (SD) format with BLUE stickers.

Pricing

C-MAP 4D is available in two price regions:

- **4D Wide** - Expansive coverage at \$299
- **4D Local** - Regional coverage at \$199



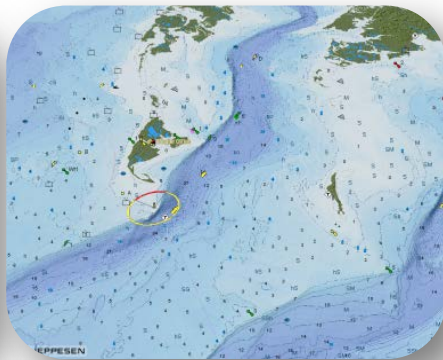
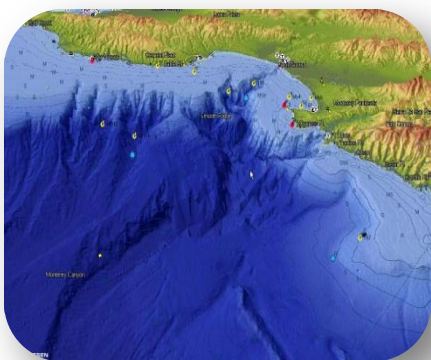
View the complete C-MAP 4D
chart catalogue online at
www.jeppesen.com/lightmarine

C-MAP 4D Content and Features

With C-MAP 4D, you invest in a navigation solution that couples C-MAP's worldwide electronic charts with the latest technology and cutting-edge navigation features that evolve to your boating needs.

3D View

3D View uses advanced digital terrain modeling on land and sea resulting in an exceptional presentation of C-MAP cartography.



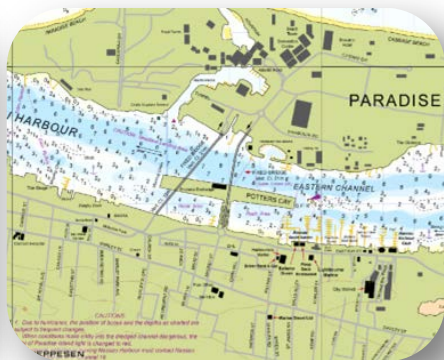
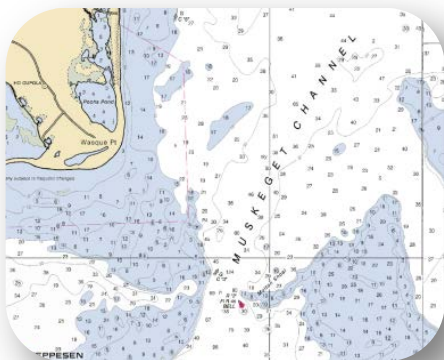
High-Resolution Satellite Imagery

See the real world on-screen using High-Resolution Satellite Imagery.



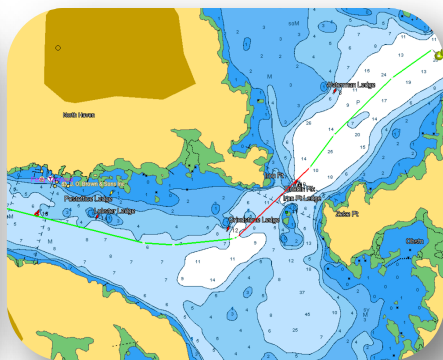
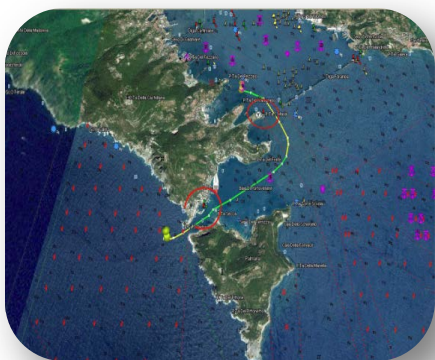
Dynamic Raster Charts

Only within C-MAP 4D do you have the ability to overlay official nautical paper charts on top of vector data.



Easy Routing

Automatically create routes from points A to B. The calculated route offers guidance within each route leg, thereby avoiding obstacles, shallow waters and dangerous areas.

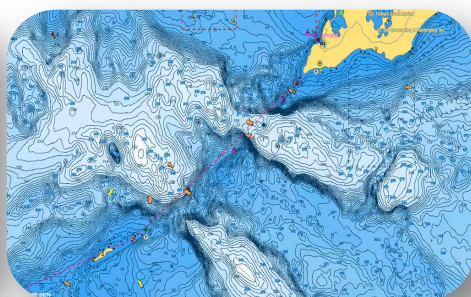
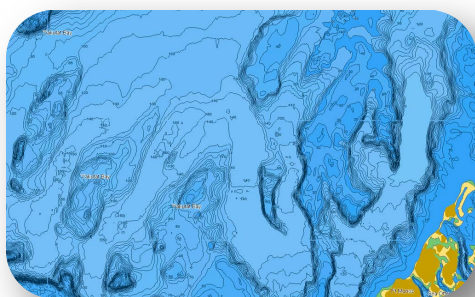


Value Added Data

Further expand your 4D experience with High-Resolution Bathymetric and Sport Fishing Data that can be easily unlocked through Jeppesen's online web store.

High-Resolution Bathymetry

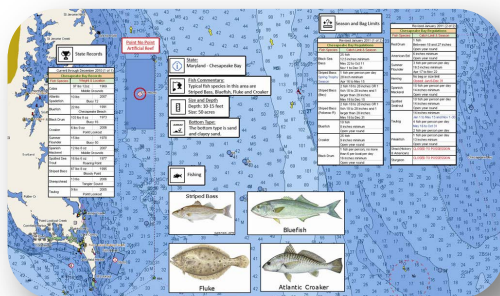
High-Resolution Bathymetry is designed specifically for fishing and adds a unique layer of proprietary bathy data that offers amazing depth and contour detail of ledges and canyons, giving you the most detailed profile of the ocean bottom.



Sport Fishing Data

Sport Fishing Data is an extensive collection of private and public sport fishing information from valued sources including NOAA, Coast Side Fishing and Baja Directions. Each sport fishing hot spot includes:

- Artificial Reefs
- Wrecks
- Hangs
- Fish ID images
- Obstructions
- Up-to-date state rules, records and regulations.



Plotter Control Options

The control keys on the Furuno GP1670F and GP1870F containing two labels have dual functions. The top label is the main function and can be accessed with a **SHORT PUSH**. The bottom label is the secondary function and can be accessed with a **LONG PUSH**.



A HOME/CTRL	Short Push	Displays home page.
	Long Push	Switches active display in combination modes.
B ENT		Confirms Operation Access info/easy routing menu
C POINTS/GO TO	Short Push	Places point at cursor.
	Long Push	Sets cursor position as destination.
D ESC/MENU	Short Push	Escape from current operation.
	Long Push	Opens the menu.
E CURSOR		Move cursor and pan Tilt/Rotate - 3D manual mode
F EVENT/MOB	Short Push	Places point at current position.
	Long Push	Put MOB at current position.
G ROTOKEY	Short Push	Displays base menu
	Long Push	Displays full menu Zoom/Enter

Customize Chart Presentation

A. Access the **MAP** to change icon size, adjust nav-aid presentation, select chart languages, predict currents and change the chart display.

1. **ESC/MENU** [long push].
2. Select **MAP**.



B. Select **CHART DISPLAY** to adjust chart overlays and transparencies for 2D, 3D, Vector and Satellite.

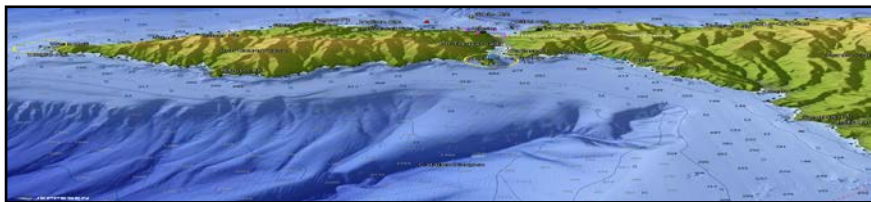
1. **ESC/MENU** [long push].
2. Select **MAP** then **CHART DISPLAY** and choose from:

PLOTTER WINDOW	Select active display location for the 2-way split screen. Default setting displays on the left half.
DISPLAY MODE	Select the chart display mode, among 2D, 2D Perspective and 3D
OVERLAY	Select the type of overlay to use: Vector , Satellite , Raster and Chart Shading (<i>not available in the 3D display.</i>)
OVERLAY MODE	Select where to display the overlay: On Land , On Sea or On All (<i>available in 2D and 2D perspective modes when [Chart Shading] is selected.</i>)
TRANSPARENCY	Set the level of transparency for satellite photos. The higher the number the greater the degree of transparency.
3D EXAGGERATION FACTOR	To enhance the view of topographical features, set the level of 3D exaggeration from levels 1 – 5. The higher the number the greater the degree of exaggeration.

Make the most of 4D

Easily navigate the features of C-MAP 4D using these quick steps.

3D VIEW



3D is viewable within the Vector, Raster or High-Resolution Satellite Imagery chart layers.

Enable 3D View

1. **ROTOKEY** [short push].
2. Select **2D/3D MODE**.
3. Under **3D**, select: Vector, Satellite or Raster.

Tilt and Rotate 3D View

1. **ROTOKEY** [long push].
2. Select **MODE** then **MANUAL**.
3. Hold in the **ENT** key to enable adjustments.
4. Adjustments are enabled when the 3D icon appears on-screen.
5. Use the cursor pad to **TILT** (up/down) or **ROTATE** (right/left) the 3D-View.
6. Hold in the **ENT** key to confirm settings.



Exaggerate 3D View

Exaggerate chart objects and underwater features.

1. **ESC/MENU** [long push].
2. Go to **MAP** then **CHART DISPLAY**.
3. Select **3D EXAGGERATION** and choose between 5 levels with 5 offering the highest exaggeration.

HIGH-RES SATELLITE IMAGERY



Overlay High-Resolution Satellite Imagery onto the most accurate vector data, viewable in 2D and 3D modes.

Overlay Satellite Imagery

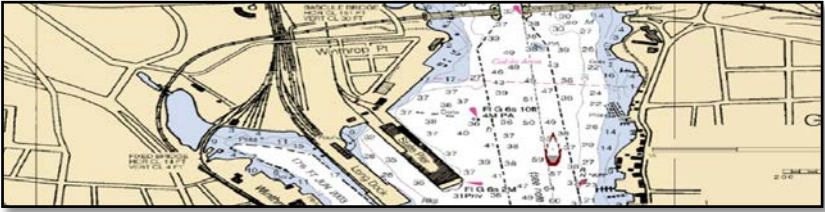
1. **ROTOKEY** [short push].
2. Select **2D/3D MODE**.
3. Choose from:
 - 2D
 - 2D Perspective (Vector/Satellite)
 - 3D (Satellite)

Satellite Transparency

Adjust the transparency for High-Resolution Satellite Images

1. **ESC/MENU** [long push].
2. Go to **MAP** then **CHART DISPLAY**.
3. Select **TRANSPARENCY**. Choose between 0-100; with 100 offering the highest level of transparency.

DYNAMIC RASTER CHARTS



The Raster Chart overlay found within 4D provides an additional navigational reference source while allowing access to vector chart detail, including: nav aids info, wrecks, obstructions, etc.
Viewable in 2D and 3D modes.

Overlay Raster Charts

1. **ROTOKEY** [short push].
2. Select **2D/3D MODE**.
3. Choose Raster from:
 - 2D
 - 2D Perspective
 - 3D

Raster Transparency

1. **ESC/MENU** [long push].
2. Go to **MAP** then **CHART DISPLAY**.
3. Select **TRANSPARENCY**. Choose between 0-100; with 100 offering the highest level of transparency.

IMPORTANT: The suggested route must be checked, edited and approved before using for navigational purposes.

1. **ESC/MENU** [*long push*].
2. Select **PLOTTER** then **EASY ROUTING**.
3. Set the following safe values:

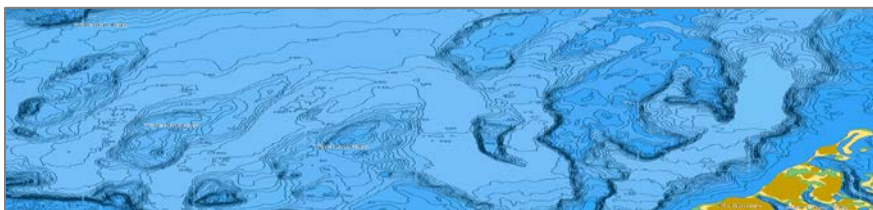
12

Calculate Easy Route

1. Place cursor on start point and press **ENT**.
2. Select **EASY ROUTING > START**
3. Move cursor to end point and press **ENT**.
4. Select **EASY ROUTING > DESTINATION**.
5. Select **ENT > EASY ROUTING > CALCULATE**. Review warnings, check route and click OK to proceed/confirm.
6. Select **OK** to finish or **DETAILS** to view results.
7. **ENT** to save route (route must be saved before changes can be made). **ESC/MENU** to exit without saving.
8. Start and end points stay on screen until deleted (for routes that are not saved and/or completed.)

<u>Route Leg</u>	<u>Description</u>
Red	Condition is unsafe for navigation, crossing dangerous areas or objects.
Yellow	Requires maximum attention. Leg crosses potentially dangerous areas/objects.
Green	No Hazards detected.
Gray	Start/End point moved to safer area.

Value Added Data



Value Added Data provides additional enhancements tailored to your changing boating needs. Using your pre-programmed C-MAP 4D card, VAD can easily be unlocked and updated online.

MANAGING VALUE ADDED DATA

Use the following steps to turn Value Added Data ON/OFF or customize to display individual objects.

1. Press **ROTOKEY** [long push]
2. Scroll to **VAD** and choose between the following for each category:
 - **DISPLAY** – select On/Off or Custom.
 - **CUSTOMIZE** – select On/Off for each VAD object.

VAD CATEGORIES

Value Added Data is divided into ‘Standard VAD’ and ‘Paid VAD’ categories. **Standard VADs** are included at no additional cost and require no unlock. **Paid VADs** are visible after a purchased unlock.

Standard VAD

Roads, Lane Elevations, Points of Interest, Tidal Stations, Port/Marina and Multimedia Content.

Paid VAD

High Resolution Bathymetric data and Sport Fishing data that includes; caution areas, fish havens, fishing ground, precautionary areas, wrecks, restricted areas and ORAs (Outdoor Recreation Areas.)

UNLOCK VALUE ADDED DATA

1. Go to www.jeppesen.com and click on **ACCOUNT/LOGIN** then select **MARINE ACCOUNT**.
2. Enter User Name and Password or select Register, for first time users.
3. Insert the C-MAP 4D SD-card into an SD-card reader and go to **YOUR MAPS**. On first use, you will be prompted to download and install MAPS MANAGER.
4. Select **ADD SD CONTENT**.
5. Select **BUY** next to the available content to be purchased then choose from:


INFO - view cartridge details.

VALUE ADDED DATA – unlock High-Resolution Bathymetric (HRB) or Sport Fishing Data (SFD).

CONTENT – upgrade to include all 4D features.

UPDATE - update chart content from old to newer version

UPGRADE – upgrade from Local to Wide

6. Click  to add selected purchase to the shopping cart.
7. Go to **SHOPPING CART**, click **CHECK OUT** then **PAY ONLINE**. Enter payment details then confirm. The message **‘Transaction completed successfully’** will be shown.
8. Return to **YOUR MAPS** and click on **APPLY TO SD** to launch Maps Manager.
9. Choose **UNLOCK**. The C-MAP 4D chart content will move to **ON THE DEVICE** and show *‘ready to install on SD’*.
10. Select **PROGRAM-SD** to start unlocking. The chart will be displayed as **READY** once the purchased C-MAP 4D content has been successfully unlocked.

133 FALMOUTH ROAD • MASHPEE • MA 02649
800.424.2627 • US-CUSTOMERSUPPORT@JEPPESEN.COM

